



# SurveilStar Employee Monitoring

---



## Device Management

*[Control device usage to prevent information leakage.]*

## Device Management Module Description

**SurveilStar Device Management** module aims to control the access permissions of various kinds of devices such as communications devices, USB devices, and network devices by performing specified Device Policy. It effectively and efficiently prevents sensitive data from leaking out via these devices.

### Device Control

- Block specified users from using specific devices
- Block using specific devices during specific time range

### Available Device Control

#### Storage Devices

- ✓ Floppy
- ✓ DVD/CD-ROM
- ✓ Burning Device
- ✓ Tape
- ✓ Movable Devices
- ✓ Non-system Drives
- ✓ Portable Devices

#### Dial

- ✓ Dial-up Connection

#### Communication Devices

- ✓ COM
- ✓ LPT
- ✓ USB Controller
- ✓ SCSI Controller
- ✓ 1394 Controller
- ✓ Infrared
- ✓ PCMCIA
- ✓ Bluetooth
- ✓ MODEM
- ✓ Direct lines

#### USB Device

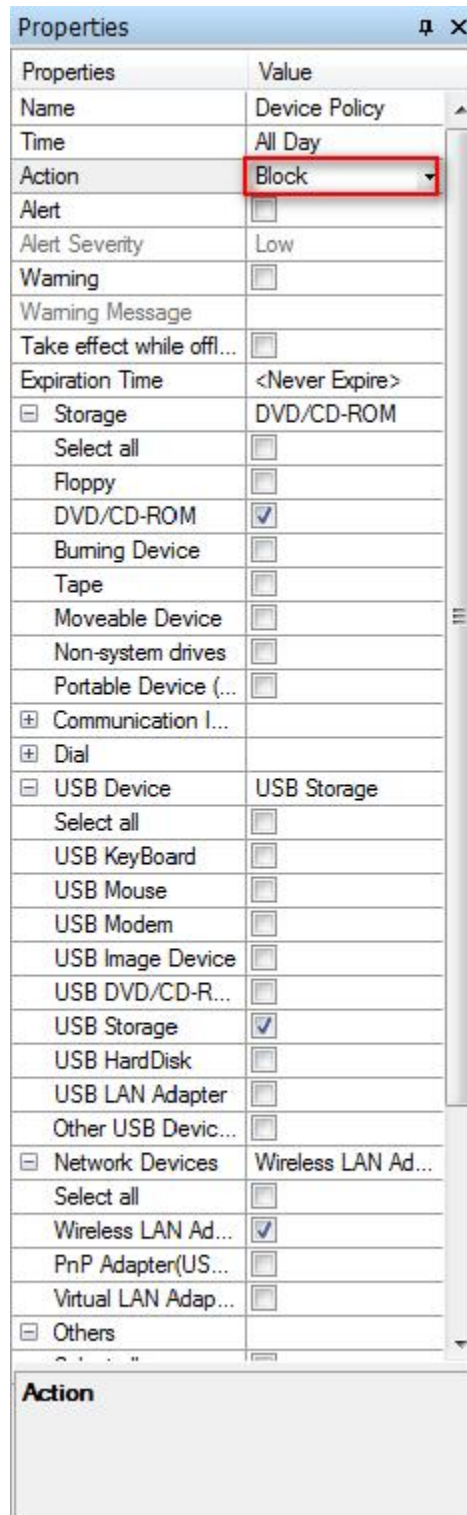
- ✓ USB Keyboard
- ✓ USB Mouse
- ✓ USB Modem
- ✓ USB Image Devices
- ✓ USB CDROM
- ✓ USB Storage
- ✓ USB Hard disk
- ✓ USB LAN Adapter
- ✓ Other USB Devices

#### Network Devices

- ✓ Wireless LAN Adapter
- ✓ PnP Adapter (USB, PCMCIA)
- ✓ Virtual LAN Adapter

#### Others

- ✓ Audio equipments
- ✓ Virtual DVD/CD-ROM
- ✓ Wireless network
- ✓ Any new devices



Properties	Value
Name	Device Policy
Time	All Day
Action	Block
Alert	<input type="checkbox"/>
Alert Severity	Low
Warning	<input type="checkbox"/>
Warning Message	
Take effect while off...	<input type="checkbox"/>
Expiration Time	<Never Expire>
<input checked="" type="checkbox"/> Storage	DVD/CD-ROM
Select all	<input type="checkbox"/>
Floppy	<input type="checkbox"/>
DVD/CD-ROM	<input checked="" type="checkbox"/>
Burning Device	<input type="checkbox"/>
Tape	<input type="checkbox"/>
Movable Device	<input type="checkbox"/>
Non-system drives	<input type="checkbox"/>
Portable Device (...)	<input type="checkbox"/>
<input type="checkbox"/> Communication I...	
<input type="checkbox"/> Dial	
<input checked="" type="checkbox"/> USB Device	USB Storage
Select all	<input type="checkbox"/>
USB KeyBoard	<input type="checkbox"/>
USB Mouse	<input type="checkbox"/>
USB Modem	<input type="checkbox"/>
USB Image Device	<input type="checkbox"/>
USB DVD/CD-R...	<input type="checkbox"/>
USB Storage	<input checked="" type="checkbox"/>
USB HardDisk	<input type="checkbox"/>
USB LAN Adapter	<input type="checkbox"/>
Other USB Devic...	<input type="checkbox"/>
<input checked="" type="checkbox"/> Network Devices	Wireless LAN Ad...
Select all	<input type="checkbox"/>
Wireless LAN Ad...	<input checked="" type="checkbox"/>
PnP Adapter(US...	<input type="checkbox"/>
Virtual LAN Adap...	<input type="checkbox"/>
<input type="checkbox"/> Others	

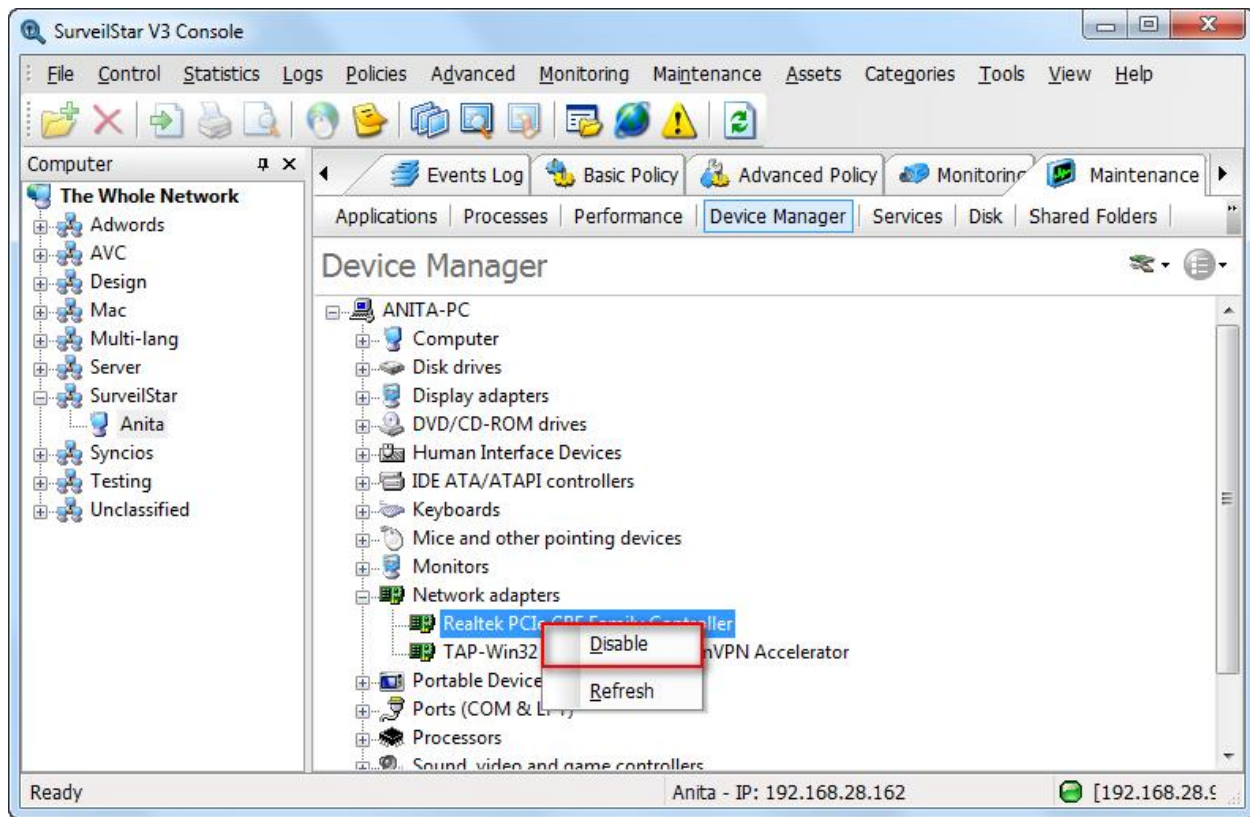
**Action**

Device Control Policy

## Real-Time Alert and Warning

- Custom warning messages.
- Pop up warning messages on the users' side if users want to run any unpermitted devices.
- Pop up alert messages on the administrator's computer if users use any unpermitted devices.

## Screen Snapshot



Agent Computer Device Manager

## More Features

- |                            |                                |
|----------------------------|--------------------------------|
| ❖ Application Management   | ❖ IT Asset Management          |
| ❖ Bandwidth Management     | ❖ Network Management           |
| ❖ Basic Management         | ❖ Print Management             |
| ❖ <b>Device Management</b> | ❖ Remote Maintenance           |
| ❖ Document Management      | ❖ Removable Storage Management |
| ❖ Email Management         | ❖ Screen Monitoring            |
| ❖ IM Management            | ❖ Website Management           |



# Try SurveilStar Right Now!

Go and [Download SurveilStar](#) Employee Monitoring Software.  
Try to Monitor 5 Employees for **30-Days** Free with SurveilStar.

SurveilStar Inc.  
<http://www.surveilstar.com>

Contact Us:  
[support@surveilstar.com](mailto:support@surveilstar.com)